



**Midlands Partnership**

**NHS Foundation Trust**

*A Keele University Teaching Trust*

# Kay Stevenson

Consultant Physiotherapist

Honorary Professor in Clinical Care and Leadership

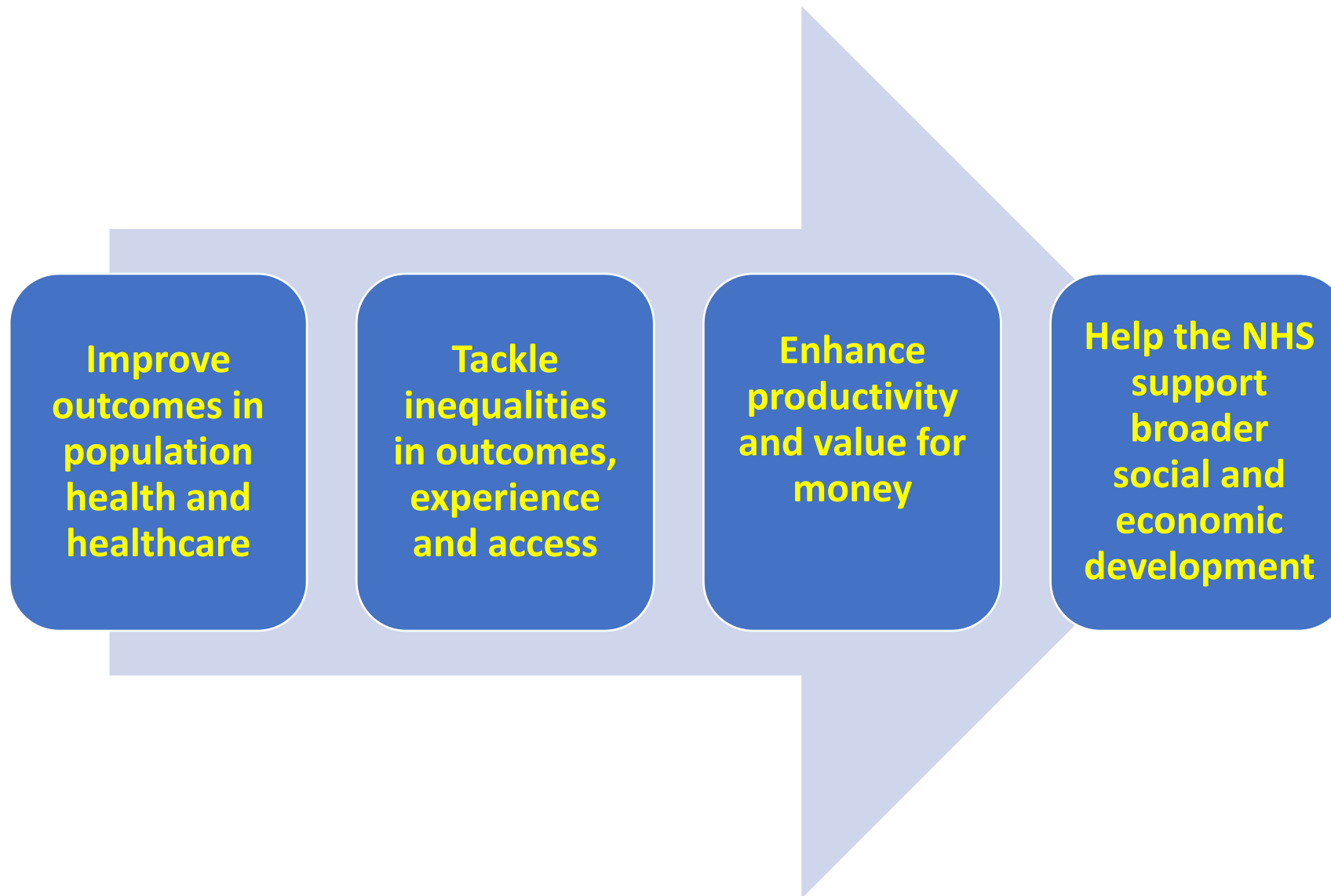
Regional AHP MSK Lead NHS England NHS Improvement



mpftnhs



@mpftnhs



<https://www.england.nhs.uk/wp-content/uploads/2021/06/B0664-ics-clinical-and-care-professional-leadership.pdf>

# Integrated care systems (ICSs)

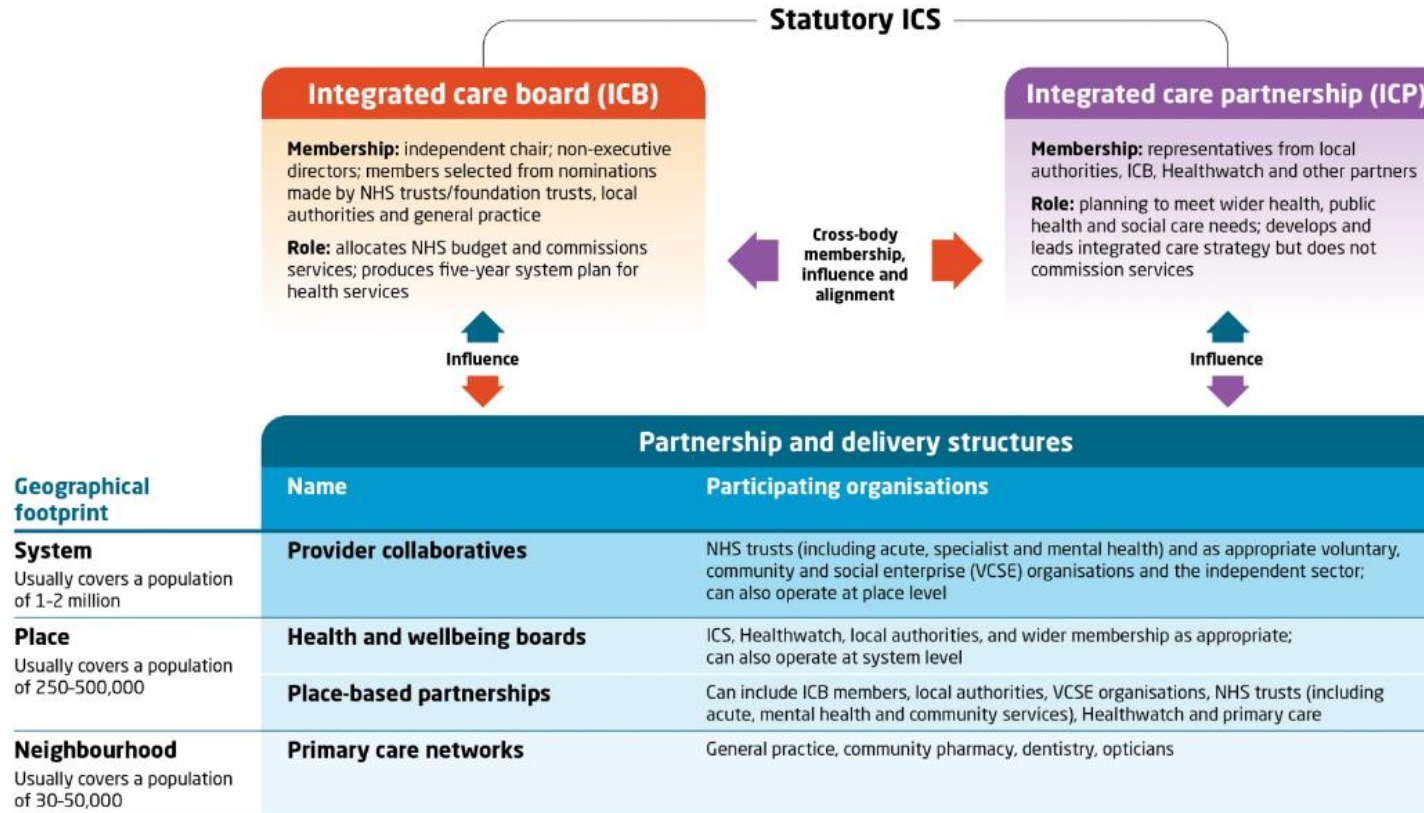
Key planning and partnership bodies from April 2022

## NHS England

Performance manages and supports the NHS bodies working with and through the ICS

## Care Quality Commission

Independently reviews and rates the ICS



TheKingsFund>

<https://www.kingsfund.org.uk/audio-video/integrated-care-systems-health-and-care-bill#&gid=1&pid=1>

Integrated care systems (ICSs) are partnerships that bring together providers and commissioners of NHS services across a geographical area with local authorities and other local partners to collectively plan health and care services to meet the needs of their population. The central aim of ICSs is to integrate care across different organisations and settings, joining up hospital and community-based services, physical and mental health, and health and social care.

<https://www.kingsfund.org.uk/publications/integrated-care-systems-explained>

Integrated care systems (ICSs) are **partnerships** that bring together providers and commissioners of NHS services across a **geographical** area with **local authorities** and other local **partners** to **collectively** plan health and care services to meet the **needs of their population**. The central aim of ICSs is to **integrate care** across different organisations and settings, **joining up** hospital and community-based services, **physical and mental health**, and **health and social care**.

<https://www.kingsfund.org.uk/publications/integrated-care-systems-explained>

# Five principles

- Ensure engagement of all
- Promote culture of share learning and innovation
- Protected time
- Training and development
- Transparency when recruiting leaders

Classification: Official  
Publications approval reference: PAR664



## Building strong integrated care systems everywhere

### ICS implementation guidance on effective clinical and care professional leadership

NHS England and NHS Improvement may update or supplement this document during 2021/22. Elements of this guidance are subject to change until the legislation passes through Parliament and receives Royal Assent. We also welcome feedback from system and stakeholders to help us continually improve our guidance and learn from implementation. The latest versions of all NHS England and NHS Improvement guidance relating to the development of ICSs can be found at ICS Guidance.

Version 1, 2 September 2021

# Value Based Health Care

- Adopt common terminology
- Identify variation and communicate to all
- Develop strategies to overcome barriers
- Implement best evidence
- Develop skills: outcome, patient experience and resource use
- Monitor and evaluate
- Share what works well



Hurst L, Mahtani K, Pluddemann A, Lewis S, Harvey K, Briggs A, Boylan A-M, Bajwa R, Haire K, Entwistle A, Handa A and Heneghan C. Defining Value-based Healthcare in the NHS: CEBM report May 2019.  
<https://www.cebm.net/2019/04/defining-value-based-healthcare-in-the-nhs/>







**Midlands Partnership**

NHS Foundation Trust

*A Keele University Teaching Trust*

# Thank you

[Kay.Stevenson@mpft.nhs.uk](mailto:Kay.Stevenson@mpft.nhs.uk)

**@kayiaupt2020**



mpftnhs



@mpftnhs