

# The role of the ICS and Place in MSK service improvement – National perspective



## ARMA Conference 6/12/21

*“The secret of success is not to foresee the future. It is to build a system that is able to prosper in any of the unforeseeable future”.*

Michael Hammer 1993.

Andrew Bennett

National Clinical Director Musculoskeletal Conditions

Consultant Physiotherapist Sutton Health and Care, Epsom and St Helier NHS Trust

Twitter - @andypbennett79 #BestMSKhealth



NHS England and NHS Improvement



# Vision for MSK



To promote life-long best musculoskeletal health for all

**Musculoskeletal health enables physical activity**

*“critical for human function, enabling mobility, dexterity and the ability to work and actively participate in all aspects of life. Musculoskeletal health is therefore essential for maintaining economic, social and functional independence, as well as human capital across the life course”*

**Reducing the global burden of musculoskeletal conditions**

Andrew M Briggs,<sup>a</sup> Anthony D Woolf,<sup>b</sup> Karsten Dreinhöfer,<sup>c</sup> Nicole Homb,<sup>d</sup> Damian G Hoy,<sup>e</sup> Deborah Kopansky-Giles,<sup>f</sup> Kristina Åkesson<sup>g</sup> & Lyn March<sup>h</sup>

**Help people to be active and live life to full**

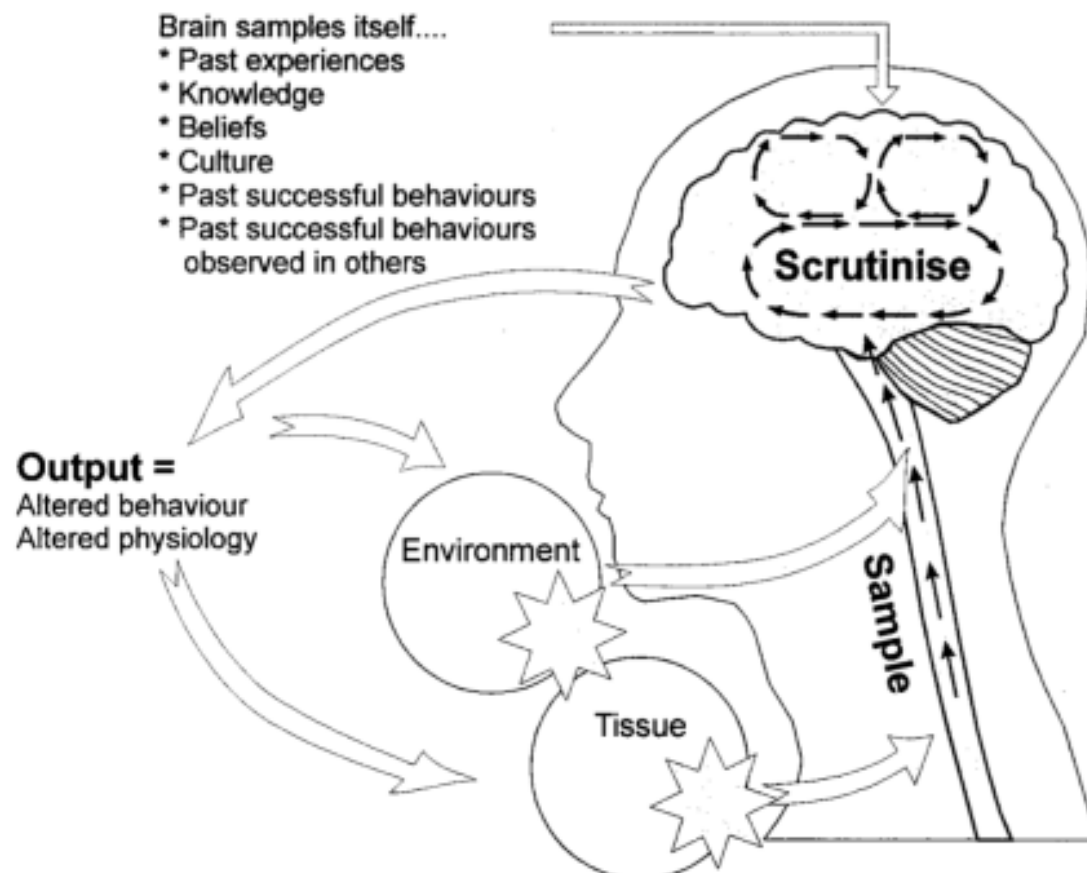
*Grow well, work well, age well – help prevent and manage other mental and physical health conditions*

**Address inequalities in access, outcome and experience**

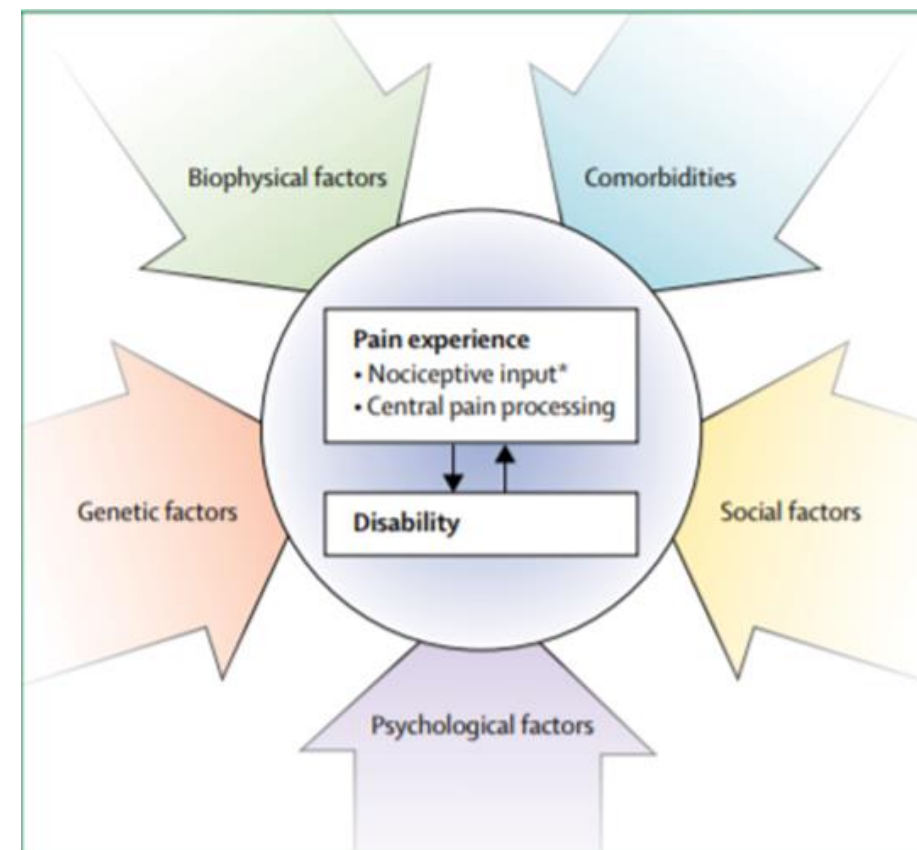
Pre-pandemic and exacerbated in context of pandemic



# How do we help people best manage pain and consequent disability



Louis Gifford's mature organism model



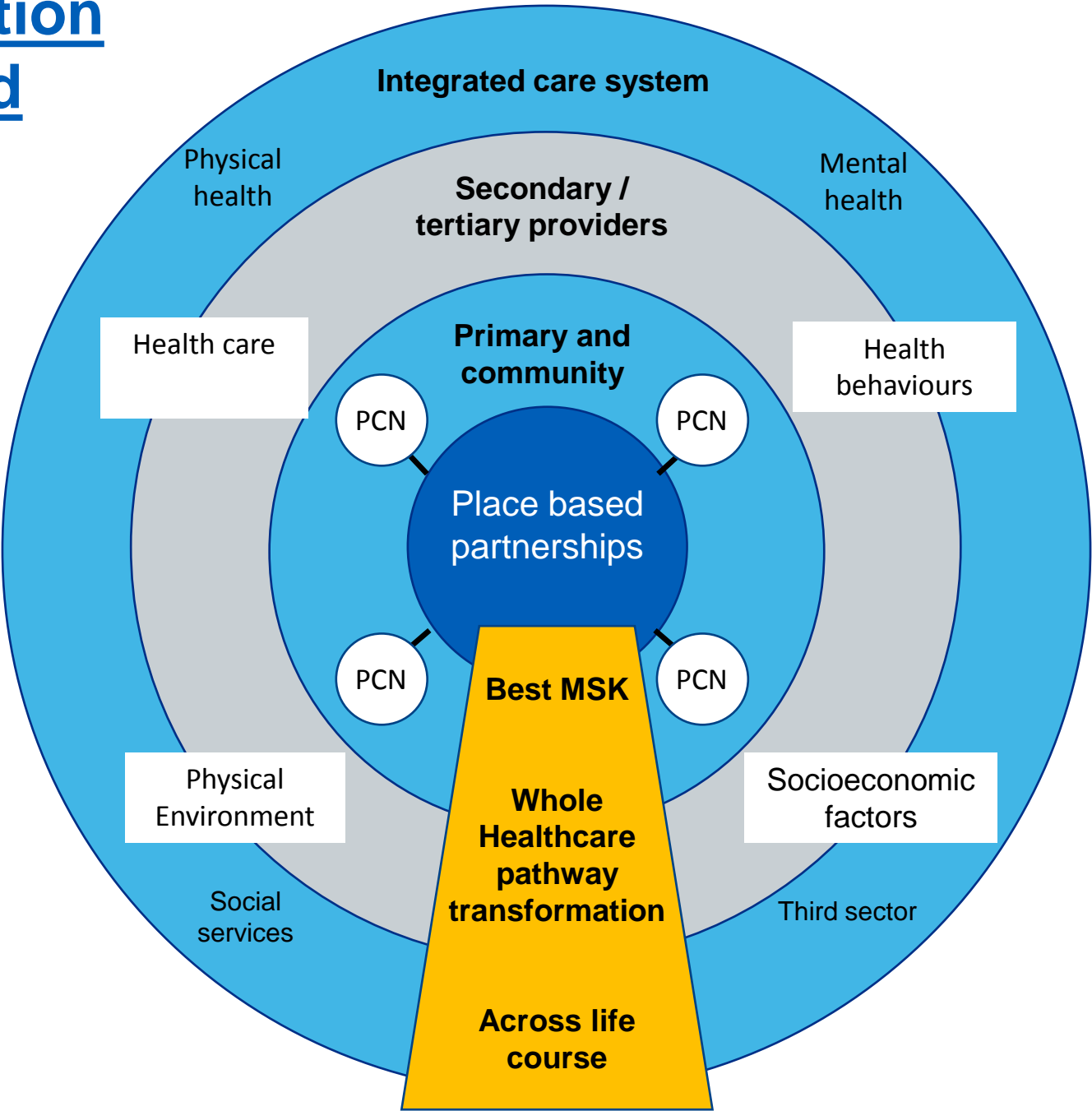
Hartvigsen et al (2018) What is LBP and why do we need to pay attention

Embedding the biopsychosocial model requires collaboration integration and co-production

# Enabling integration collaboration and coproduction

## Align with ICS aims

- improve outcomes in population health and healthcare
- tackle inequalities in outcomes, experience and access
- enhance productivity and value for money
- help the NHS support broader social and economic development

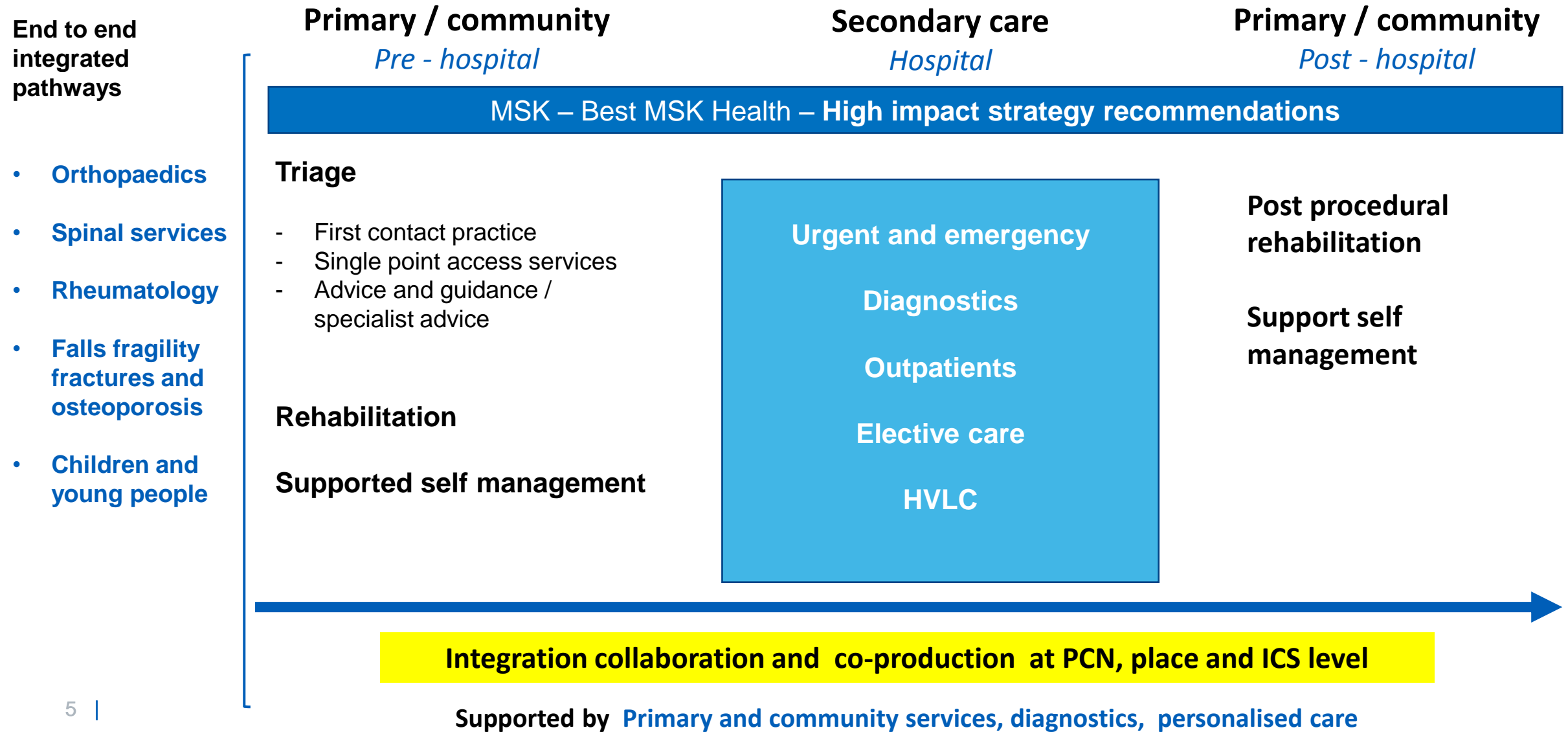


Delivered through co-production, collaboration and integration

Clinically lead locally owned transformation of care

- Equitable access
- Best outcomes
- Best experience

# Integration collaboration and co-production across the health pathway



# The role of the ICS and Place in MSK service improvement



Key to choreographing the collaborative approach to co-produce integrated MSK service provision embedded within the principles of the biopsychosocial model, adapted to meet local population needs accounting for variance in resources

# Questions

- How do we decide what our local MSK priorities are ?
- How do we ensure integration at ICS/place ?
- How do PCN's fit into this ?
- What would be your key priorities for the next year?
- How do you think this will look in 10 years time ?
- What are the risks and associated challenges we need to overcome ?