



Strategic coproduction

NHS England and Improvement

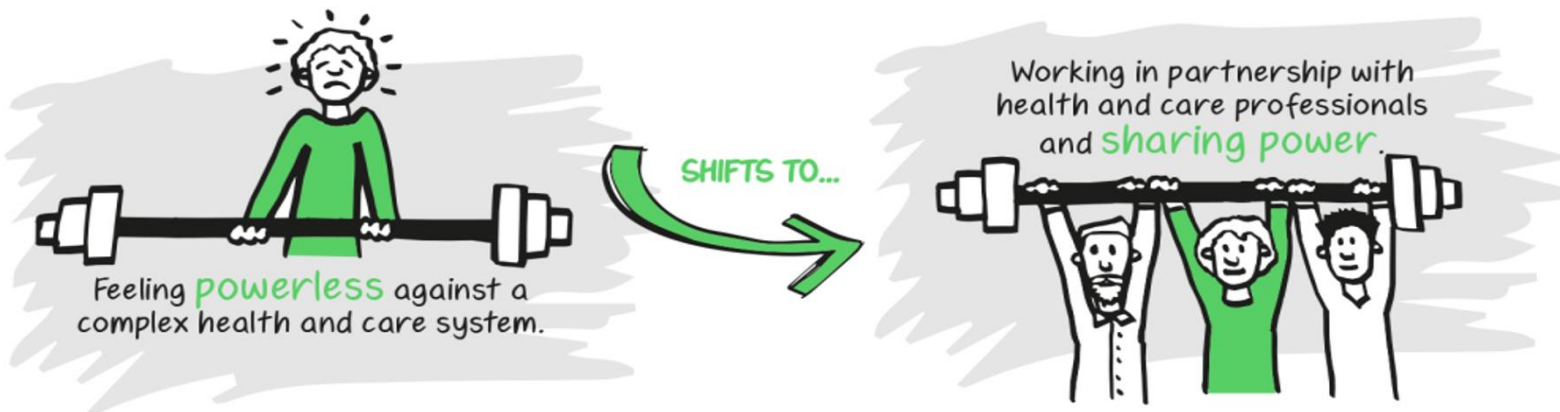
**ARMA - Thinking Differently
6th December 2021**

Amy Herring (she/her) -
Regional Lived Experience Manager (London and South East)

Improvement as a shared responsibility

“There should be much greater emphasis on shared responsibility for improving health and care between patients, the public and the NHS. The cultural change we would like to see affects staff as well as patients because it requires staff to work differently in order to fully involve patients and the public in decisions about their health and wellbeing. By staff, we mean both clinicians who provide care and support and others working in public services.

The potential to shift the nature of relationships between services and service-users is further illustrated by the growing role and influence of patient leaders in the health and care system. There are well-established examples of patient leaders working at both a local and national level to drive change and improvement, support greater collaboration and hold services to account. This requires a fundamental shift in the power dynamic between patients and professionals towards ‘a dialogue of equals’ and the development of capabilities for collaborative working and leadership”. [Shared Responsibility for Health - The Kings Fund 2018](#)



What IMPACT can peer leadership have on the health and care system



I - Insight - Provide Insight so everyone understands what matters most to people by hearing their experiences and feedback



M - Model - Help model a positive culture, which supports and values co-production, diversity and inclusion



P - Proof - Help gather proof/evidence of the impact of good services and their positive outcomes for people and the system



A - Active - Be active with people working in the health and care system in the development of strategic priorities and policy through coproduction, focussing on what matters to patients/people

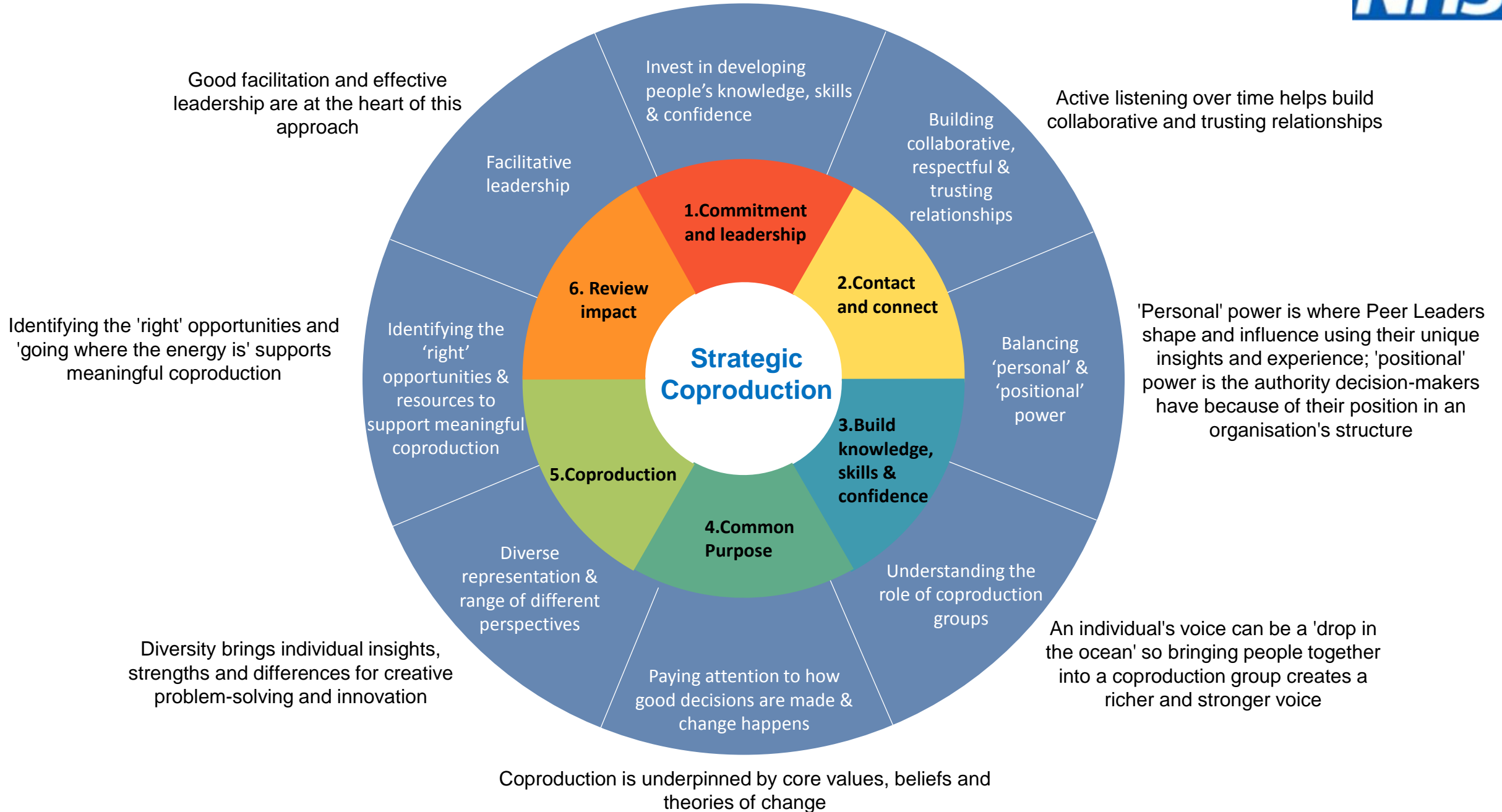


C - Champion personalised care to 'win hearts and minds'



T - True to Purpose - Help your organisation or service stay 'true to purpose'

We're all equal as people but we're not equally able to contribute without the necessary knowledge, skills and confidence



Thank you

To find out more

For more information about the Peer Leadership Development Programme, please e-mail the national lived experience team: england.pldp@nhs.net

[Peer Leadership Development Programme](#)

For more information about the approach to strategic coproduction, click here: [Strategic coproduction for personalised care](#)

